

TENS Symposium

March 21, 2025 | 9 a.m.-3 p.m. | Hybrid
In Person: Graham Center 150
Zoom: go.fiu.edu/TENSSymposium

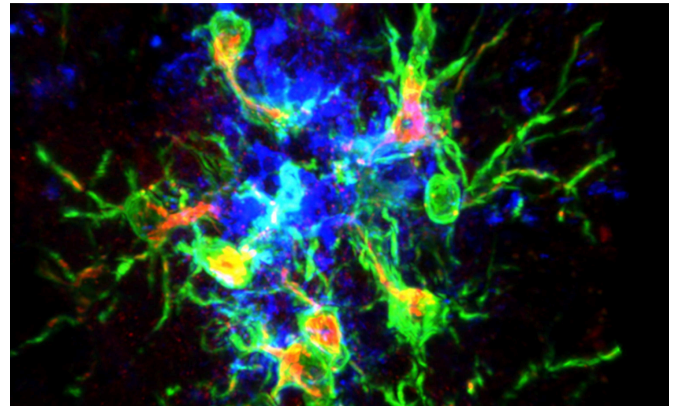
Workshop:

Bridging the Gap: Understanding Environmental Impacts on Brain Health

Objectives:

- Understand how environmental exposures influence brain development, function, and disorders.
- Foster interdisciplinary collaboration and solutions for mitigating neurotoxic impacts.

| Time | Session Name |
|----------------------------|--|
| 9:00 a.m. - 9:15 a.m. | <p>Overview of workshop goals and agenda <i>TENS Directors: Roberto Lucchini, Ph.D.; Timothy Allen, Ph.D.; Kim Tieu, Ph.D.</i></p> |
| 9:15 a.m. - 10:00 a.m. | <p>The role of exposome as determinant for Alzheimer’s Disease Related Disorders <i>Jason Richardson, Ph.D.</i> <i>University of Georgia, Department of Physiology and Pharmacology</i> <i>Isakson Center for Neurological Disease Research</i></p> |
| 10:00 a.m. - 10:40 a.m. | <p>Drosophila: A primer for precision medicine in neurodegenerative disorders. Use of NAMs and multi-omics to study GxE interaction that can drive neurodegeneration. <i>Souvarish Sarkar, Ph.D.</i> <i>University of Rochester, Department of Environmental Medicine</i></p> |
| 10:40 a.m. - 11:00 a.m. | <p>Coffee break & Networking</p> |
| 11:00 a.m. - 11:40 a.m. | <p>Mechanisms of memory generalization in anxious youth and the role of environmental factors. <i>Aaron Mattfeld, Ph.D.</i> <i>FIU Neuroscience of Memory and Development Laboratory</i></p> |



TENS Symposium

March 21, 2025 | 9 a.m.-3 p.m. | Hybrid
In Person: Graham Center 150
Zoom: go.fiu.edu/TENSSymposium

Workshop:

Bridging the Gap: Understanding Environmental Impacts on Brain Health

Objectives:

- Understand how environmental exposures influence brain development, function, and disorders.
- Foster interdisciplinary collaboration and solutions for mitigating neurotoxic impacts.

| Time | Session Name |
|-------------------------|---|
| 11:40 a.m. - 12:00 p.m. | <p>Panel discussion: “Emerging environmental threats to cognitive health”</p> <ul style="list-style-type: none"> • Topics: Air pollution, climate change, microplastics, endocrine disruptors, noise, EMG fields, social isolation, lack of green spaces and their neurological effects. <p><i>Chair: Kim Tieu, Ph.D. and speakers as panelists</i></p> |
| 12:00 p.m. - 1:00 p.m. | <p>Lunch break & TENS trainees poster session featuring their research</p> |
| 1:00 p.m. - 2:30 p.m. | <p>TENS projects evaluation</p> <ul style="list-style-type: none"> • Discuss each project of the current six trainees after viewing their posters with mentor feedback. |
| 2:30 p.m. - 3:00 p.m. | <p>Future directions of the TENS program: Closing remarks and action items</p> <ul style="list-style-type: none"> • TENS Directors summarize the day’s learnings. • Focus on emerging research areas and collaboration opportunities. |